

School Image Damaged By Raided Party

MIZZOU NEWS

University of Missouri at St. Louis

Vol.2, No.6

January 12, 1966

Cost 10¢

S. A. President, Treasurer Resign Following Student Court Ruling

Alleged Involvement In Raided Party Violates University Rules

Student Association President Alan Handler and Treasurer Ralph Orlovick have resigned from the Executive Board of the student government in face of an investigation by the Student Court of their alleged involvement in the off-campus party raided by St. Louis County police, December 17.

In a statement to Dean of Students Harold Eickhoff, Handler and Orlovick said that their resignation was a result of circumstances that have occurred in the past two weeks which made it impossible for them to discharge their duties as officers of the Student Association.

A full report will be made public upon conclusion of the investigation.

In the wake of the Court ruling, the Student Association Senate was called to an emergency session, January 5.

Continued on Page 5

Student Court Chief Justice Takes Leave

Chief Justice William G. Price has temporarily resigned his position on the Student Court to take a leave of absence until next semester.

Price explained that the Court's investigation of the raided off-campus party would require too much time before finals to do a thorough job.

Price said he regretted leaving the burden of the investigation with his fellow court members, but he feels student activities come second to his education.

"I realize that the Court is the only branch of student government that has taken any constructive action in regard to the party."

"The Court's action is an opportunity for the student government to shed its reputation as an apathetic, do-nothing body."

Price served on the Student Court last year and was elected Chief Justice this semester. His term runs until June of 1966.



WHO'S WORRIED? These smiling students crowded on the stairway in the country club building don't seem to be worried about upcoming finals. But their expressions will change when exams begin later this month.

No Additional Enrollment Expected Next Semester

Chancellor James L. Bugg, Jr. told the Student Advisory Council recently, that no additional increase in enrollment is expected for next semester.

The overcrowded conditions of classrooms, lounge areas and offices this semester was due to delays in the construction of the new classroom building.

"If we had known that the new building would not have been completed on schedule, we would not have accepted as many students last fall," he explained.

Although the enrollment will not increase in February, Chancellor Bugg sees little relief in overcrowded conditions in the future.

"We will be fighting the problem of space shortage from now on," he said.

Others Have Problems

"It is the University policy to enroll any student who is in the top two-thirds of his graduating class, but the question is just how far do you go in meeting demands."

Dr. Bugg indicated that our campus is not the only one in the University system plagued with overcrowding and space shortage.

"The other schools at Kansas City, Rolla and Columbia are in no better shape than we are," he explained.

The Chancellor went on to tell the Advisory group of his disappointment with the Student Association.

"I'm concerned with a governing body that will function effectively," he said, "but so far student government has failed."

Dr. Bugg expressed hope that the special Senate committee to reorganize student government would find a solution.

"I can get around the Student Association," he said, "but this doesn't solve anything. Hopefully the S.A. will work out something themselves."

Chancellor Bugg also empha-

Continued on Page 3

STUDENTS PLAY SANTA CLAUS

Surprise Party For Deserving Children

The students at the University of Missouri at St. Louis played Santa Claus for twenty-five underprivileged children from the Normandy district on Saturday December 19.

Each child received two toys from Santa. The money for these toys was allocated from Student Association funds.

The children's party was organized by Miss Cheryl Taylor, the social committee chairman of the Student Association.

After they received their presents the children were treated to refreshments donated by Angel Flight, Pepsi-Cola, Cool Valley Dairy, Florissant Valley Dairy, Continental Baking Co. and Ser-vomation.

The Children's Christmas party is an annual event sponsored by the Student Association.



SURPRISE CHRISTMAS. Santa Claus (Gerald Shanfeld) paid a surprise visit to twenty-five beaming children Dec. 19 at the annual Student Association Christmas party for underprivileged tots. Each child received two gifts from Santa. photo by Steve Schrier

The Inside Story

NEWS: S. A. officers resign following Student Court action. SEE page ONE.

FEATURE: Almighty Tigers at Mother zoo give Cubs here own animal preserve. SEE page THREE.

EDITORIAL: Senator calls for support of student government. SEE page TWO.

SPECIAL: Day and Evening Division examination schedule listed. SEE page FOUR.

SPORTS: Cagers get back on winning track with win over Meramec Community College. SEE page SIX.

Our Editorial Policy

We shall be non-partisan and non-sectarian, reporting only the facts surrounding the issues, and reserving comment for the editorial page. We will objectively and honestly report the news without restraint within the bounds of good taste; however we will not be afraid to print controversial matters.

In issuing the paper, the MIZZOU NEWS will strive to meet three primary purposes: 1. As observers of campus happenings, we will be the watchdog of the student body. 2. We will promote student-faculty relations through better understanding. 3. By reporting school-related events, we will increase the interest of students and community in UMSL.

Pamela Johnson,
Editor-in-Chief

The University First

The University of Missouri at St. Louis is in a period of transition—from a small community-based residence center to a sprawling, sophisticated urban university. No one here denies the growing pains and most are proud of the tradition being established.

This academic year has seen and will see many grave problems—all of which rest on the already overburdened shoulders of a few. The University—as an entity—has faced undependable contractors, a mis-managed bookstore, inadequate library and cafeteria facilities, a serious traffic flow and parking problem, and internal upheaval in the student government.

And all the while, many, many, individuals and organizations have watched with interest, some friendly, some hostile. It is to these people, and the rest of the world, that we—the University as a whole—must prove ourselves as an academic institution.

For this reason, everyone must carry his own weight, whether it be a student who studies for the Dean's List, a secretary who works ½ hour overtime, or an associate professor who moderates a campus organization. However, when a person in a position of responsibility fails to carry out his obligation as a leader, the seriousness of the offense is compounded. Whether it is the Chancellor or a Senator in the Student Association who fails, it is the welfare of the people who are depending on that person, and it follows, the welfare of the University, that is at stake.

Keeping this in mind, it is certainly regrettable—but not necessarily forgivable—that the University suffered such widespread publicity because of the raided off-campus party last December 17. At that time, the President and the Treasurer of the S. A. were charged with 45 others for the alleged possession of liquor.

The *Mizzou NEWS* would like to point out that it is not because of any civil wrongdoing that the Senate and the Student Court are investigating this matter, but because two University regulations were broken and dishonor brought to the University.

How would you react if all the news media across the nation heard that our Dean of Students was arrested at a marijuana party? Then shouldn't anyone who has a position of responsibility in the University act accordingly? For certainly along with any position of trust, there are standards to live up to.

Unfortunately most of us, at one time or another, learn by experience. And sometimes the price for that experience is greater than at other times. In this case, the price was just; however it was nobly paid. Mr. Handler and Mr. Orlivick, by tendering their resignations from their respective offices, have returned, in some measure, honor to the Student Association.

Pamela Johnson

**I don't believe
McDonald's sells
a million
hamburgers a day!**

THEY DON'T.

I knew it!

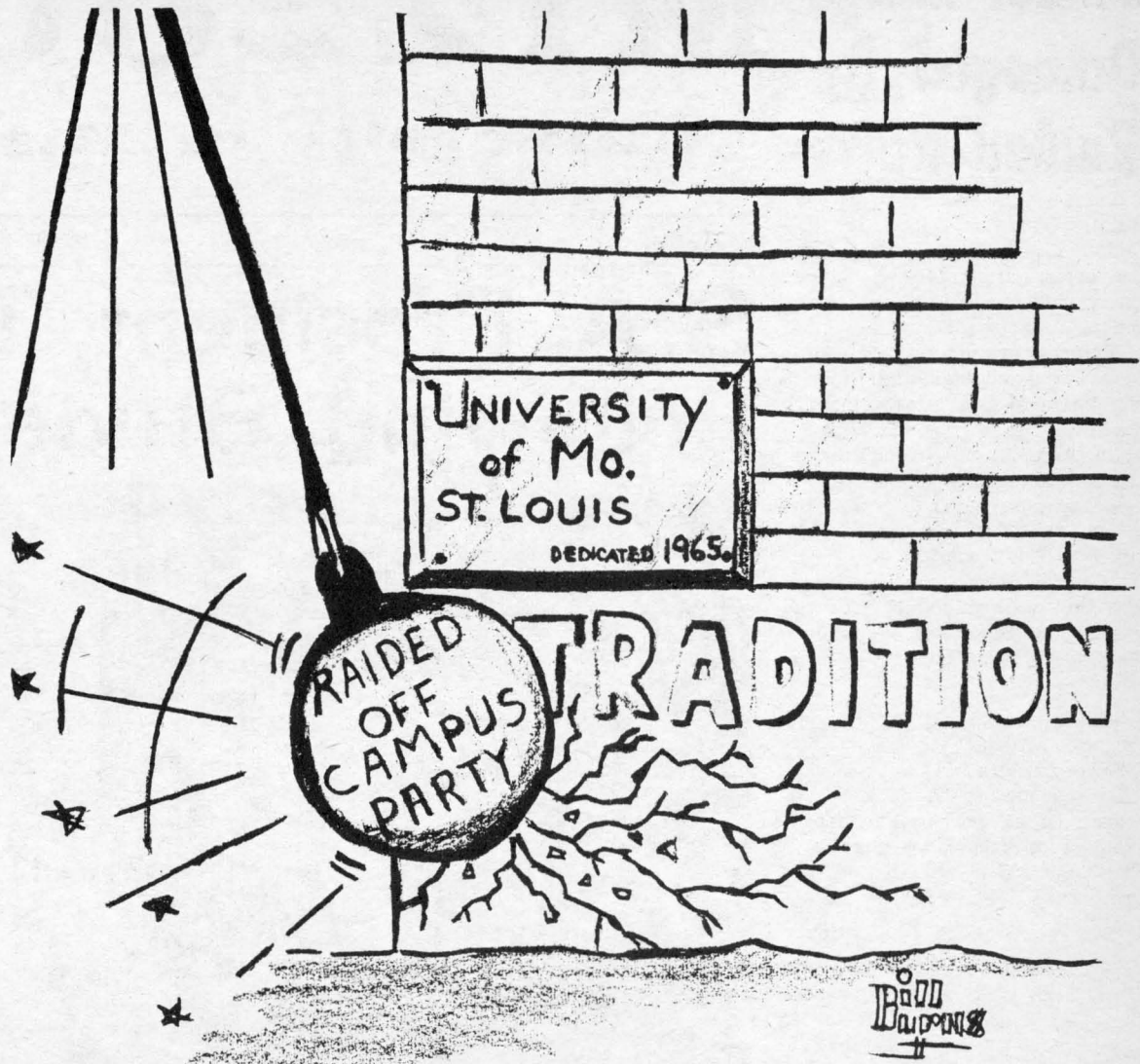
THEY SELL A MILLION
THREE HUNDRED THOUSAND.

Oh.

McDonald's
Look for the Golden Arches—where quality starts fresh...every day.

8624 Natural Bridge

CRACKS ALREADY?



What Our Readers Have to Say . . .

Pompous Bel-Nor

Dear Editor,

The time has long since passed for patience with the Bel-Nor militia. Strutting about, spewing pomp and mass condemnation, it has made a ludicrous circus of law enforcement and has desecrated community respect for law and order.

Anarchy is surely the only alternative to law enforcement, but when police authority becomes an implement of prejudice and hatred, it's time to call a halt. Antagonism has been the byword of the Bel-Nor police force since two-thirds of its taxable base was converted to non-taxable university by the State of Missouri. It has provoked disrespect at every turn, from selfishly magnifying an already critical university parking problem to using Gestapo tactics to tow away cars charged with violation of signs posted stealthily after the fact.

Need Supervision

One case in point is the lack of needed supervision during dismissals at the corner of University Lane and Natural Bridge. Several UM-SL students have had near-collisions there with motorists wantonly running stop signs on Natural Bridge. These were not isolated incidents, yet there is still no police responsibility.

The University of Missouri at St. Louis is a part of Bel-Nor, whether it likes it or not. Mutual understanding and effort could easily liquidate all problems created by the location of such a concentration of students in this area, but no solution is possible when one party insists on striking without provocation.

Something must be done to negotiate a peace soon. Student attitude is such that a virtual mental state of war exists between UM-SL and the Village of Bel-Nor. The failure of the Bel-Nor police to earn the respect, if begrudgingly, of students at the university poses a serious problem for far more than UM-SL and the insignificant village of Bel-Nor. It could soon

become a county-wide crisis.

Sincerely,
Donald Lee Day

Support Your Senate

Dear Editor,

Last week, after some debate, the Senate formed a special committee to investigate the legality of the Court's action to dismiss the student government officers. The resignation of the President and Treasurer was read, and after great debate, was finally accepted. In addition, a nomination committee was formed to present candidates for appointment by the Senate to fill these now vacant positions. The candidates will be accepted from the student body thus allowing for a non-Senate member being appointed.

This Wednesday meeting was one of the most productive meetings that the present Senate has ever seen. I see this as the first real showing of the new face of the Senate. The Senate has finally shown that it can act and that it has the potential to be a dynamic representative body.

Nine new committees have been formed and these will replace the now existing standing committees. These new committees are parking and traffic, the library development, academic affairs, social affairs, athletic affairs, publicity of all functions on campus, student welfare, community relations, and

rules and elections. These new committees are even more of a sign that the Senate is beginning to accept its role as the representative governing body of the students.

While it is true that all the committees in the world won't make a better Senate if the Senators don't care what happens, I believe that the combination of the shake-up by the Chancellor, the restructuring of the Senate work force, and the fact that the Senate did take an active interest in the condition of its Executive Board are an indication that more will happen.

The New Senate

This is the new Senate. This is the Dynamic Senate. Watch it, support it, and keep it informed and it will respond by giving you the chance to be represented in the University. Pay no attention to it, don't support it, don't feed it the information it needs, and it will die before it has a chance to show what can be done.

Your Senate can only give to you what you take the time to give to it. Know who your representatives are, keep them informed of what you are thinking and you will see results. Don't and you will get nothing in return. Then it will be just as much the fault of the student body as of the Senate if it (the Senate) falls.

John Franks, Senator

MIZZOU NEWS

University of Missouri at St. Louis

The MIZZOU NEWS is published bi-weekly by the students of the University of Missouri at St. Louis, 8001 Natural Bridge Road. The policies of the Mizzou NEWS are the responsibility of the editors. Statements published here do not necessarily reflect the views of the administration or any department of the University.

Editor-in-Chief Pamela Johnson
Managing Editor George M. Killenberg
Special Events Editor Mary Collier

STAFF WRITERS

Bev Boyce, Donna Brandes, Bill Burns, Don Day, Judy Dennison, Sue Estes, Kathy Frohoff, Lyn McCuddy, Monica O'Reilly, Bill Price, Francine Story, Jennifer Ward, Louis Wexberg, Joy Zumbuhl, Julie McGuire, Bill Ruzicka.
Faculty Advisors Miss Judith Jenkins, Mr. William Whealen
Photographer Don Pearlne

Almighty Tigers at Mother Zoo Give Cubs Here Own Preserve

Once upon a time there was an Ivy League zoo in our area. It was no ordinary zoo, for its ugly cyclone fences were raised to keep previously trained and accomplished animals out rather than to keep the tender juveniles in. It had once been only a residence center where poor natives were prepared for better training in longer established zoos in other communities. Even before that it had been an animal preserve decorated with holly greens and boasting Iron Clubs.

Have Own Zoo

One glorious day the almighty tigers at the mother zoo decided it would be nice if their cousins in our area had a zoo of their own to dominate. They approached the natives who were running the animal show at the residence center about converting the one-time animal preserve into a full-fledged zoo. These local bears had established the center especially for their own cubs, which they loved dearly. The tigers must have been quite persuasive, for the natives soon decided that the surplus food to be gained from the deal was more important than the education of their cubs and sold it for a fraction of its original cost.

The trainers at the center were, of course, elated at the news. They immediately changed its name, so it would seem more impressive (even though it wasn't).

by DONALD DAY

But the mama and papa bears of the immediate area were less elated. In fact, they were angered. After all, everyone knew that animals in training, whether lambs or foxes, were destructive, vicious, and insolent. These natives of Bell-Nerve reacted violently and with malice when a few stray animals accidentally sat right in front of Bell-Nerve residences.

The new animals, who could see nothing that they had done wrong, were rightly perturbed when the bullies of Bell-Nerve, sporting tin badges and wooden clubs marched on the new zoo in their technicolor uniforms. Under siege for they knew not what, the new animals at the zoo began to wonder at the quality of justice in the area. The Bell-Nerve bullies stopped them for walking too fast, for walking the wrong way, for disturbance of the peace, and, in fact, for every silly little thing except breathing the wrong way.

The zoo itself was a challenge. New animals had to trip over monkeys and pigs employed by the mother zoo to construct new animal shelters when on their way to training sessions. The puzzled learners alternately froze, then fied as the construction animals struggled to complete the building (in between Bud rounds and softball games).

The final blow came when the leading animal on campus (who, curiously enough, was a bug, not a tiger) heard that the elected leader of the commoners at the zoo had attended a private party during the Christmas recess and had been seen in the presence of those highly spirited.

The prestige of this new zoo had been damaged. News of the party was spread nationwide as the zoo gained some notoriety (it would have never have been on the map any other way).

Pressures were brought to bear on the victimized animal leader and his associates not only from the administrative bug, but also from the mother zoo. Something had to be done. The party had been totally separated from the zoo and on animal time, but by some curious logic the administrators and trainers at the zoo construed it to be their duty to reprimand these individuals severely. There was even talk of dissolving the popularly elected animal government.

Animal Government

The victims of circumstance resigned rather than face an extended fight with the tigers (who were bigger than they) and hurt their chances for correct training. The fable of animal self-government at the zoo was totally smashed, never to be reconstructed. It is a good thing the mother zoo didn't force the animal leader to be kicked out of the zoo totally, though, for the animal reaction would have, no doubt, been shockingly violent.

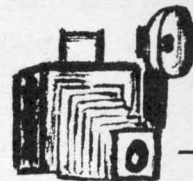
The zoo continued on its sad way in total dictatorship. But year by year, as the reputation of the compound spread its way through all the animals of the area, fewer and fewer natives made their way to this zoo. Instead they all went to farther away zoos, even to the mother zoo, which had somehow remained unmarred by the incident (even though they were the real instigators).

Trainers Leave

Attendance at the zoo dwindled to almost nothing. The quality of trainers shrunk accordingly. Eventually the bug and I. Cough, and all the trainers were forced to pack up and return to the mother zoo.

Now our cubs must go untrained and unready for the rigors of life in the harsh outside, all for the want of a little understanding of the practical and justified limits of authority and social criticism.

Photopinion



"What action, if any, do you think the school should take in regard to the party raided December 17?"

DONALD DAY

University social authority is debatable even on campus. The college is morally obligated to develop student maturity academically, not socially. This incident, regardless of moral implications, took place on student time in an area totally divorced from the campus. Students off of campus are no longer students, but young adult individuals. University authority must not and cannot be extended to include the non-collegiate social life of any student. The University should take no action whatsoever.



DAVID ZERRER

Irregardless of my feelings toward the party of the students arrested, I find the St. Louis news media treated this affair as vultures treat a stricken calf in the desert. I do think the student court and student government have the right to take any action they see fit, and as a senator I will comply with any ruling by the court or senate.



Student Union Among Topics For Meeting

(Cont. from Page 1)

sized the need for a school image, or symbol.

"One big problem the University faces is how to establish an image or symbol that will unite the students." A respected image would help the University obtain endowments, research grants and donations he explained.

Also an image would help instill loyalty in the students and graduates of the University.

Chancellor Bugg went on to explain the general floor plan for the proposed student union building.

Tentative plans call for nearly 20,000 sq. ft. to be taken by food service facilities, including a large cafeteria area.

An additional 10,000 sq. ft. will be needed for the book store. Student offices will cover another 4,000 sq. ft. and nearly 3,500 sq. ft. would be used for lounge areas.

Dr. Bugg explained that no definite plans for floor space had been made, but that the union building is expected to be completed by 1968 and will be located next to the country club building.

ELAINE GRANOT

I think that the party was not affiliated with the school in any way, therefore, the school should have very little to say about what we do after school. Only at a school sponsored function do they have the right to censure anyone.



MIKE LONGCOR

I do not think that the University has any basis for passing judgment on these students arrested during a raid at a party during the Holiday Vacation. First, the group at the party was not composed entirely of students from the University of Missouri. Second, the party did not involve the school. What students do on their own time should be entirely up to them and judgment or punishment should be left to parents, guardians, or police, not to the University.



SOPH SANDI MARTIN

Miss St. Louis Combines Beauty With Intelligence

Petite Sandra Martin, Miss St. Louis 1965, is the ideal of what the well rounded American girl should be. Miss Martin, a sophomore who started at UMSL in June 1964, is a math major and plans to teach at Ritenour, her home high school. She is an active member of the Young Democrats, the Landmark Staff and the Chancellors Student Advisory Council. And in addition to working twenty hours a week she helps with a girl scout troop.

Crowned Miss St. Louis

Sandi was crowned Miss St. Louis in May 1965 after the final elimination of contestants at the De Ville Hotel. She was selected for the finals after a preliminary interview in which all but twelve of the entrants were eliminated. These finalists were judged on appearance in swim suits, formal gowns and on conversational ability and poise. She received her crown from visiting Miss Kansas.

Sandi insists she had a ball and if given the chance would do it again—even if she had lost.

As the representative of St. Louis she was entered in the Miss Missouri contest in June and had she won would have gone on to try for Miss America. Her only regret about the state contest was that it was held here in St. Louis so that she was the only one of the ten city queens who did not get to travel.

In her duties as Miss St. Louis Sandi has taken part in the Mid American Raceways parade, the Overland fair parade and served as official hostess of the Overland Fair. Along with her title she received an entire wardrobe of clothes. She will hold her title until the summer of 1966 when her last act as reigning queen will be to help in the crowning of the new Miss St. Louis.



SANDI MARTIN

This is not the first contest Sandi has entered. In a contest for Sweetheart of St. Louis sponsored by the Explorer Scouts she was voted Sweetheart of the Old Trails District.

by LYN McCUDDY

Hubbel
Jewelry

Large Selection
Charms And Gift
Items

No. 21 NORMANDY
SHOPPING CENTER

We sell the
good watch.



CARAVELLE[®]
division of Bulova
from \$10.95

E. A. Horstmeyer
7246 Natural Bridge
EV 2-3063

Favazza Florists

Flowers and Corsages For Every Occasion

No. 7 Normandy Shopping Center EV 3-4576



Put Your Best Face Forward!

Use CENAC . . . the NEW medicated lotion for treating pimples and other skin blemishes associated with acne.

CENAC'S invisible film helps mask blemishes while it promotes healing.

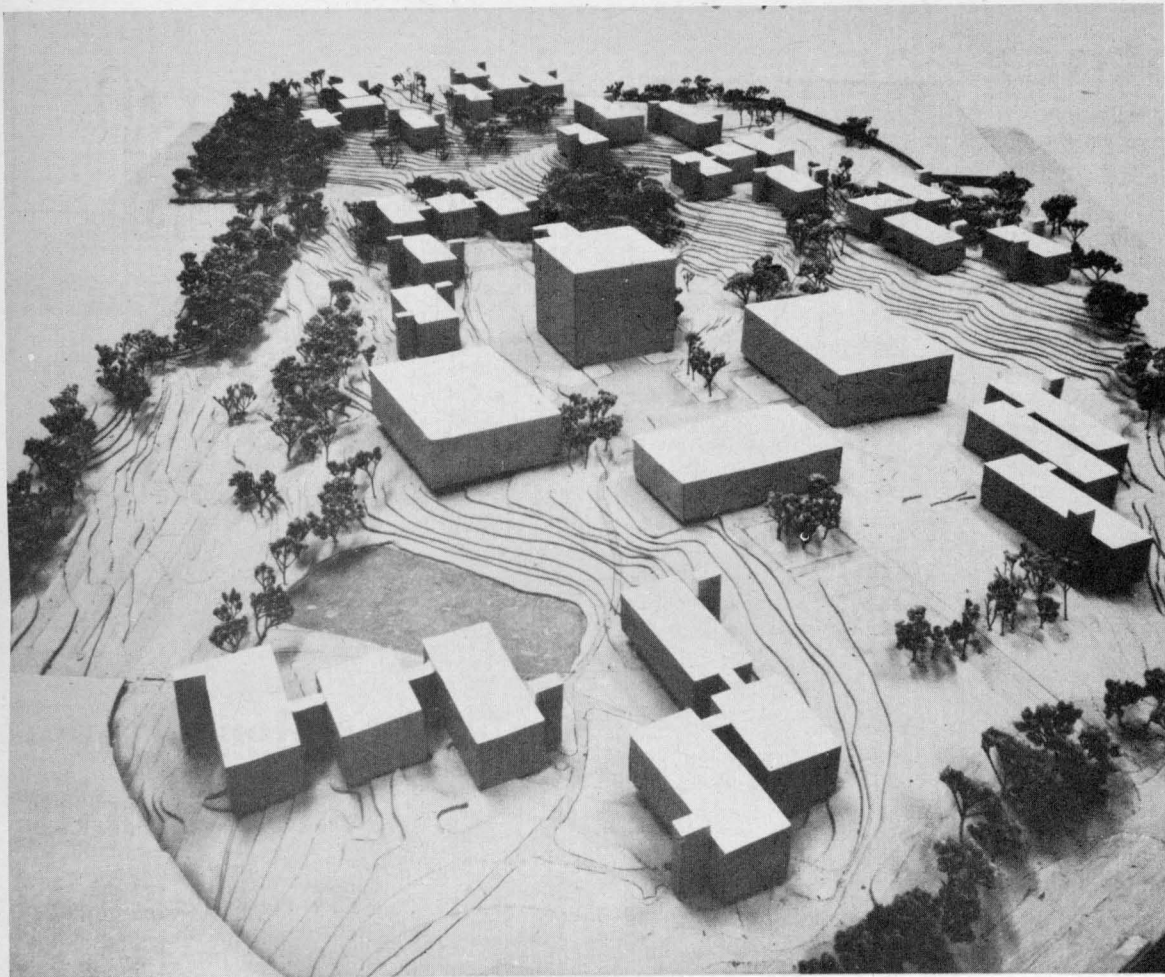
CENAC'S lotion is greaseless and non-caking.

CENAC'S faint medicinal smell disappears after drying and is replaced by . . .

Spicy after-shave aroma with Cenac for Him
Light Apple-Blossom scent with Cenac for Her

2 oz. bottle lasts 4 to 6 weeks.
at drugstores only!





FUTURE CAMPUS. Architect's model of futuristic St. Louis campus demonstrates unity of planned construction. Excluded are proposed parking lots and garages and an athletic oval. The University has a \$2 million Federal loan pending for an essential student union to supplement a \$6,600,000 appropriation from the Missouri Commission on Higher Education for science, business, and physical education facilities. Enrollment is projected at 20,000-plus at completion.

Administrators Have Certain Duties In Chain of Command

by DONALD DAY

Mizzou NEWS Staff Writer

University responsibilities have been researched to be of an individualistic, maturity basis. With this issue, we examine the "other side of the coin:" the delegation of authority and duties to the administrative arm of the university system.

Of prime concern to us, of course, are the prerogatives of officials on the St. Louis campus. We are governed by a chain of command extending from Chancellor Bugg through eight administrative officials and the faculty. In a very real sense, the faculty becomes a branch of the administration in many policy matters.

Dr. Bugg at Helm

The St. Louis campus is piloted by Chancellor James L. Bugg, Jr., once an American Civilization instructor at the Columbia campus. He was elevated to the Dean of Faculties when the Normandy School District sold the campus to the university system. This term he was further honored by being declared Chancellor as we became a full-fledged, four year authorized institution. As our chief administrator, he directs all activities, academic as well as non-academic. He is directly subordinate to the President of the University of Missouri system.

Plans Degree

Second in command is Dr. Glen Driscoll, Dean of Arts and Science. All academic activities on campus, except Teacher Education, are directed from his office. The division of Teacher Education is directly responsible to the Chancellor. Dean Driscoll's main responsibility is the aid of students in the planning of their degrees. All records regarding student academic progress and standing are stationed in his office.

Non-academic activity is regulated by Dean of Student Affairs Harold Eickhoff. His supervision is felt in student government, in particular.

Dr. Joy E. Whitener is the Dean of the Evening Division. College courses offered at night carry

full college credit. He has similar authority over evening students that the Chancellor has in the Day Division.

The faculty exercises authority through a network of committee systems. Administration officials propose measures to the faculty through a system of 24 standing committees. These include everything from Academic Advising to Center on Metropolitan and Community Studies. Each year Dean and Division Chairmen submit faculty candidates for committee posts. The Chancellor makes appointments on the basis of these

reports. He also appoints certain select students to these committees so that the student body has a voice in executive decisions.

Chain of Command

The chain of command of MUSL is a self-contained entity, but is not supreme in this realm. It must be remembered in any evaluation of administration actions that pressures are frequently brought to bear by powers outside of the system. These include public opinion as well as socio-political influences at Columbia. Actions may not necessarily be popular with the individual administrator, but necessary for the preservation of the university system image as a whole.

First Semester Exam Schedule

DAY AND EVENING DIVISION EXAMINATIONS LISTED

I. The final examinations for the first semester 1965-66 will be held during the period Monday, January 31, 1966, to Monday, February 7, 1966.

II. Courses scheduled for five credit hours which meet at the SAME hour or at DIFFERENT hours during the week (e.g., 8:00 MWF, 10:00 TTH) and in which a three hour final examination is desired may hold final examinations at either or both of the two-hour periods assigned in the examination schedule.

Courses scheduled for three credit hours which meet only twice each week will hold their examinations at the time scheduled for the hour in which the class begins (e.g., 8:30-10:30 TTH will hold examinations at the time scheduled for 8:00 TTH).

III. The examinations for Mechanical Engineering Drawing courses will be arranged by the instructor.

IVa. **DAY DIVISION EXAMINATION SCHEDULE:**

Following is the schedule for group examinations. Your instructor will announce in class the room in which your examination will be held. If you have more than one examination scheduled at the same hour, consult your instructor as soon as possible.

COURSE

English 10, 12, 65 GH & 160, All Sec.	Monday, Jan. 31	8-10 a.m.
Chemistry 263	Sec. Monday, Jan. 31	8-10 a.m.
Accounting 36	Sec. Monday, Jan. 31	10:30-12:30 a.m.
Marketing Management	Sec. Monday, Jan. 31	10:30-12:30 a.m.
Mathematics 12, 80, 175 and 201	Sec. Monday, Jan. 31	1-4 p.m.
Biology 3, Chemistry 3, Physics 3	Sec. Tuesday, Feb. 1	8-10 a.m.
Psychology 1 and 170	All Sec. Wednesday, Feb. 2	8-10 a.m.
French 1-2, German 1-2, Spanish 1-2	Thursday, Feb. 3	8-10 a.m.

Examinations for all courses not specifically listed above are scheduled as follows. In each case the examination will be held in the room used for recitation during the semester.

CLASS PERIOD

2 MW, 2 MWF, 2 Daily
10 MW, 10 MWF, 10 Daily
8 MW, 8 MWF, 8 Daily
3 MW, 3 MWF, 3 Daily

Tuesday, Feb. 1 10:30-12:30 a.m.

Wednesday, Feb. 2 10:30-12:30 a.m.

Wednesday, Feb. 2 1-3 p.m.

SCHEDULE OF EXAMINATIONS

First Semester 1965-66

9 TTH
12 MW, 12 MWF, 12 Daily
11 MW, 11 MWF, 11 Daily
8 TTH
9 MW, 9 MWF, 9 Daily
1 MW, 1 MWF, 1 Daily
10 TTH
2 TTH
11 TTH
12 TTH
1 TTH

Thursday, Feb. 3 10:30-12:30 a.m.

Thursday, Feb. 3 1-3 p.m.

Friday, Feb. 4 8-10 a.m.

Friday, Feb. 4 10:30-12:30 a.m.

Friday, Feb. 4 1-3 p.m.

Saturday, Feb. 5 8-10 a.m.

Saturday, Feb. 5 10:30-12:30 a.m.

Saturday, Feb. 5 1-3 p.m.

Monday, Feb. 7 8-10 a.m.

Monday, Feb. 7 10:30-12:30 a.m.

Monday, Feb. 7 1-3 p.m.

IVb EVENING DIVISION EXAMINATION SCHEDULE:

Class Period

5:30 p.m. MW
6:40p.m. M.W.
5:30 p.m. TTH
6:40 p.m. TTH
8:15 p.m. MW
8:15 p.m. TTH

Monday, Jan. 31 6:30-8:30 p.m.

Monday, Jan. 31 6:30-8:30 p.m.

Tuesday, Feb. 1 6:30-8:30 p.m.

Tuesday, Feb. 1 6:30-8:30 p.m.

Wednesday, Feb. 2 6:30-8:30 p.m.

Thursday, Feb. 3 6:30-8:30 p.m.

Political Corner

Campus Groups, GOP

by Monica O'Reilly

by Louis Wexberg

Colleges, like individuals, should be careful in choosing the company they keep. An organization or club is sometimes allowed to establish itself on a campus without first being closely scrutinized as to its objectives and proposed method of operation. In this way, an outside pressure group can gain a foothold and an opportunity to influence the thinking of young men and women.

Unhappy Discovery

Before long, the students are most unhappy to discover that the school which they attend is receiving a great deal of unfavorable publicity because of the new organization's radical or controversial activities. Attempts to oust the trouble-making organization meet with such noisy and determined resistance that administrators sometimes feel that they are sitting on dynamite and reluctantly back down. This has been the case with several universities which are now known nationally or even internationally as radically left-wing because of the activities of a very vocal minority campus organization.

More than a few colleges have been disturbed to see the cooperation and harmony which had existed among campus groups and clubs replaced by factionalism and hostility resulting from the agitation tactics of a new campus organization. The type of organization is dedicated to a particular point of view and will spare no effort to impose their viewpoint upon the other people with whom they share the campus. The organizations which have caused serious trouble on U.S. campuses are all politically oriented in one way or another; however, they sometimes claim no political ideology until after they are firmly established on the campus. Then the problems begin. The worst trouble at colleges in the United States has come from the openly pro-Communist Dubois Clubs and others of the far left, but less radical groups have caused their share of trouble too.

Continued on Page 5

The Republican Party in 1966, has excellent opportunities for recapturing lost congressional seats. All candidates, of national stature, are running as moderates, thus confirming the hypothesis that Republican success depends upon a broad appeal rather than a limited conservative approach. The lesson of Goldwater was a costly defeat in terms of potential young moderates such as Charles Percy and Robert Taft, Jr. After the fiasco of 1964 the Republicans had to re-group, and that they did with the replacement of conservative Dean Birch as National Committee Chairman by Ray Bliss, Ohio's efficient moderate. The next step along the road to reapproachment was the election of John Lindsay as mayor of New York City. His victory cannot be directly attributed to the Republican Party, but had he lost, the GOP would have shared his defeat! Currently, in Illinois, Massachusetts, Oregon, and Ohio interesting developments are taking place.

Expects Percy Victory

The defeated Republican candidate for Governor of Ill., Charles Percy, has decided to challenge veteran Democratic Senator Paul Douglas. The race will be close, but I expect a Percy victory due to the fact that Lyndon Johnson does not run until 1968. The coattail effort of 1964 will therefore not play the influencing role of sweeping Democrats into office.

Senior Senator Leverett Saltonstall of Mass. (Rep.) is retiring from office, thus initiating the candidacy of Mass. Attorney General Edward Brooke, occupant of the highest elective office now held by a Negro in the United States. He will also become the nation's first Negro junior Senator from Mass. This statement is not mere conjecture for in 1964 he carried the state by 800,000 votes while Lyndon Johnson scored a landslide victory.

Oregon's Republican Governor, Mark Hatfield, has decided to run for the Senate. The immediate result of his decision was the

Continued on Page 5

Angel Flight Forms Group On Campus

A wing of Angel Flight, a nationwide womens service organization affiliated with Arnold Air Society, has been chartered at UMSL. Its function, like that of the other flights at Washington University and throughout the country, will be to serve as hostesses and guides for school and ROTC functions, carry on charity work, and organize recreational activities on campus.

Selection of the ten girls accepted for membership was done by a screening board made up of members of Arnold Air Society, a selective organization with its members drawn from those enrolled in ROTC; the aerospace instructors from Washington University: Helen Jackson, Sandy Blodgett, Carol Enger and Jane Moore, who had already been voted membership by the Arnold Air Society. Selection was on the basis of appearance, school activities, grade point (minimum 2.0), and conduct during the interview.

Helen Jackson Commander

Of the 26 original candidates those accepted were: Helen Jackson, commander of the flight; Jane Schlichtemier, executive officer; Andi Dorriere, administrative services officer; Judy Dennison, comptroller; Jane Moore; Sandy Blodgett; Joyce Zumbel; Jackie Burriss; Elanore Lowry; and Carol Enger. The officers were elected at the first meeting.

The flights first project was the contribution of cookies to the Senate's party for underprivileged children. Projects now underway are the sponsorship of a bridge tournament in conjunction with the Landmark, and a guided tour of Scott Air Base with a lecture on the Viet Nameese war on January 9. Future plans include sending homemade foods to the service men overseas, and the national conclave at Dallas this spring. At Dean Eickhoff's request they have volunteered to serve as hostesses and ushers at the honors convocations and faculty teas.

To Increase Membership

In February the membership will be increased through a pledge program similar to that of many sororities. Candidates will be interviewed informally at a tea given by the flight. Final selection will be made on the basis of a formal interview by an elimination board. Notification of the procedures and dates for application will be published in the paper and posted on the bulletin board for those interested.

Handler, Orlovick Resign S. A. Posts

(Con't. From Page 1)

After moving to form a special committee to determine the Court's legality to suspend student government officers, the Senate voted to accept the resignation of Handler and Orlovick.

The Senate also chose to fill the posts left vacant by the resignation as prescribed in the S.A. constitution. A committee to select candidates will report to the Senate January 17.

"If you don't know Cameras —
know your Dealer"

St. Louis Photo

3400 Lindell JE 5-6040



EXCITING DAY. S. A. Christmas Party for underprivileged children, ended with refreshments served in the cafeteria. It was an exciting day for tots and the students who helped plan the party.

'Political Corner' Writers Discuss G.O.P., Radicals

by Monica O'Reilly

(Continued from Page 4)

When student-instigated trouble erupts at a state-supported college, the students sometimes find to their regret that the legislators down at the state capital take a dim view of this sort of activity and have no intention of subsidizing it with additional state funds. Community leaders may also withdraw their political support of the school's requests for money. When this happens, the entire student body suffers.

Considering all of this, it would be well for us to take more than a passing glance at any organization which seeks admission to our University. We should ask what it is, specifically, that the organization proposes to do and how they intend to do it. Of vital importance is the question of how they intend to pursue their goals. An organization may state, for instance, that they merely intend to promote peace. This is fine. When we ask how they intend to do it, however, we may discover that they plan to stage draft-card burnings and "Ban the Bomb" demonstrations. This is not so fine.

If, after informing ourselves, we feel that the proposed organization will make a worthwhile contribution to the University, we should welcome it. On the other hand, if it appears to be the pawn of a political pressure group, I believe that we should ask our student Senators to vote it down.

The University of Missouri at St. Louis is building a reputation of which we can all be proud. We have had neither trouble nor dishonor here--the slate is clean. With the help of all of us, the University can keep it that way by choosing wisely the company it keeps.

by Louis Wexberg

(Continued from Page 4)

announced retirement of veteran Democratic Senator, Maurine Neuburger. Hatfield displays the unbeatable Kennedy style and grace. He has not lost yet and I do not believe that 1966 will be the time for a first time.

Robert Taft would like to be a congressman from Ohio once again. Like Charles Percy, his chances are excellent. For Taft barely suffered defeat at the hands of Barry Goldwater or Lyndon Johnson, depending on how one looks at it. History will undoubtedly repeat itself in Ohio.

John Lindsay, Charles Percy, Edward Brooke, Mark Hatfield, and Robert Taft represent the re-vitalized breed of Republicans who are making an effort to return a base of power to the enervated Grand Old Party.

S. A. To Show Top U. S. Films

The Student Association will sponsor a "first" in a series of movies which will begin on Friday, January 21, at 8:00 p.m. in Room 105 and will continue every other week thereafter.

Price of admission will be 50¢.

The following movies will be presented:

Jan. 21 Captain Newman M.D.
Feb. 4 Carry On, Nurse
Feb. 18 Bridge on the River Kwai
Mar. 4 Anatomy of a Murder
Mar. 18 Under the Yum Yum Tree
April 1 The Cardinal
April 22 Charade
May 6 Flower Drum Song

All students are urged to take advantage of this opportunity which is being made available to them.

'Agony' No 'Ecstasy' Says Movie Critic

Michelangelo was a frustrated Florentine sculptor forced into painting by a dynamic, if irreverent Pope. Charlton Heston is a box-office fortress whose main claims to fame are on "other-century" face and inhuman concentration. Both are giants in their respective fields, but are disappointingly incompatible, at least as depicted in The Agony and the Ecstasy, playing at the Ambassador.

The Agony premiered Christmas Day in something less than epic fashion. It displays little scene mobility and plot variance and is woefully inadequate in relating Irving Stone's title classic, but has commendable character development.

Harrison Superb

Rex Harrison undoubtedly carries the film with his superb characterization of warrior Pope Julius. With an incredibly tolerant sense of humor, unflinching determination, and touching compassion, he captures the warm audience identification crucial to success.

Charlton Heston as Michaelangelo enacts a professional performance faithful to his reputation, but is miscast. The Florentine was a short, plain individual, with hardly the towering height of Heston. But more important, the character of Michaelangelo as written is far too narrow. He is stereotyped as an erotic and temperamental artist and is far more selfish and irreverent than the original Stone character.

Most disappointing is the limited screen representation of the basic best-seller. Sequences important to faithful character and plot development are ignored. Despite this and other weaknesses, however, The Agony and the Ecstasy, in color and Todd-AO 70, makes for an entertaining outing. It might be wise to wait until this flick moves to neighborhood theatres and pop prices. Tickets for weekend evenings are \$2.50 for balcony and \$3 for orchestra.

Student Art To Be Shown

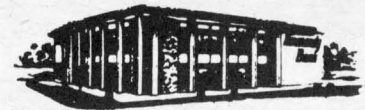
The Student Association will sponsor an exhibit of student art on Friday, February 18, 1966, to March 11, at Art-Mart Gallery, 31 North Meramec, Clayton, Missouri.

All students must submit their art to the Student Association office before January 14--there is no limit to the number that may be submitted. Any media or style may be used, but pictures must be framed or canvassed, etc., in order to be exhibited.

There is no charge for admission, and the paintings will be priced reasonably.



Why should college students
PAY BY CHECK?



Your Normandy Banker says that this is the best way for you to keep track of your money, to know where it goes, and thus to enable you to manage wisely and create a surplus. No, you don't have to be 21. Please stop in. Our officers will be delighted to serve you!

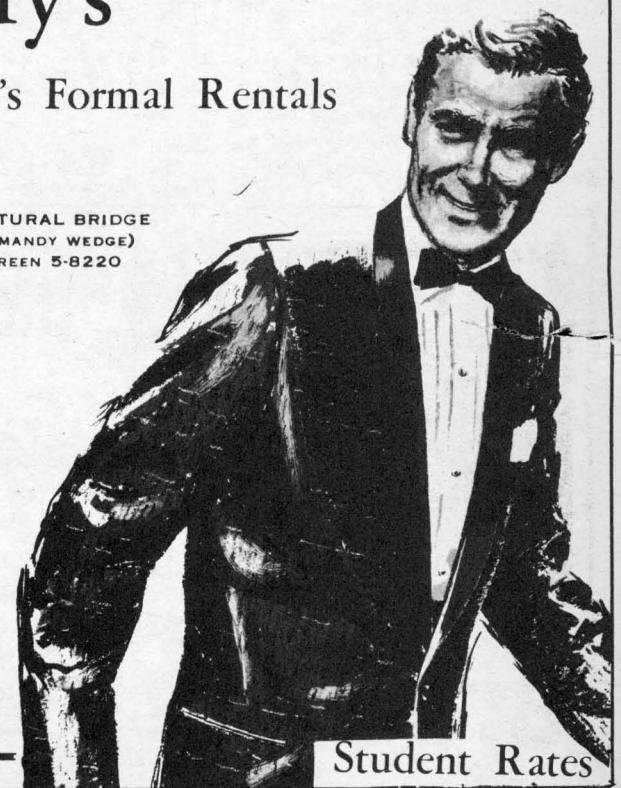
Normandy Bank

7151 Natural Bridge (just east of Lucas Hunt Rd.)
Free Parking on all four sides--1400 spaces

Barry's

Men's Formal Rentals

7318 NATURAL BRIDGE
(AT NORMANDY WEDGE)
EVERGREEN 5-8220



Student Rates

Blue Boar Inn

BAR B-Q * CHICKEN * STEAKS

! MEET THE GANG !

Hours

Wed., Thur., Fri.
6:30 p.m. to 12:00 p.m.
Sat., Sun.

1:30 p.m. to 1:30 a.m.

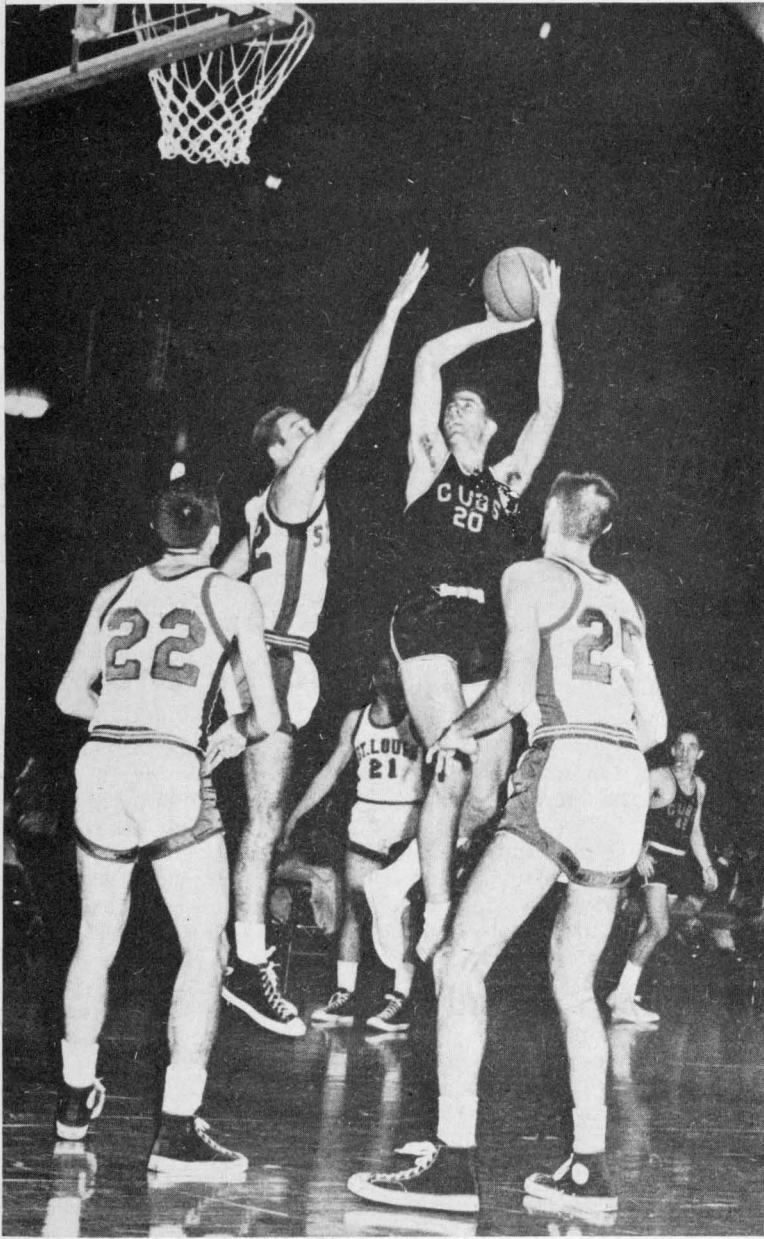
Carry Out

7662 ST. CHARLES ROCK RD.

PA. 5-1666

(1/2 BLOCK WEST OF NORMANDY DR.)





IT'S GOOD! Ron Clark scores a basket over the outstretched hands of a St. Louis University defender. The cagers dropped the contest, 90-57, to a strong Billiken Freshman squad. Photo by Steve Schrier

Cagers Get On Victory Trail With 79-77 Win Over MCC

Steve Novack's two foul shots in overtime gave the UMSL cagers a 79-77 victory over a stubborn Meramac Community College team last Saturday night.

The clock had already run out but the officials claimed Novack was fouled with four seconds left.

The game began with UMSL very cold, falling behind by eleven points at one time. However, the team did not fall apart and fought back to hold a two point lead with seconds left only to have the MCC team tie the score at the buzzer.

Dave Willson was high man for UMSL with 19 points. Tom Wood paced Meramac with 26 points.

UMSL lost to the St. Louis University freshmen at Kiel Auditorium 90-57. Up to the last three minutes of the first half the game was touch and go. At one time the team tried to use the running style of basketball. This style through the second half combined with the lack of rebounding and a

fine individual effort by Tom Thomas of the Billikens Freshmen proved to be the team's downfall.

The UM-SL basketball team started its four game winning streak by beating St. Louis Christian College 97-56.

Next the UMSL cagers downed Florissant Valley in an 88 to 67 league triumph on the away court.

Then the team rolled on to defeat their archrival Sanford Brown, 90-81. Again winning on an unfamiliar court, this time at Concordia Seminary, the squad was led by Ron Clark with 27 points.

The cagers continued their streak by topping Florissant Valley 98-78 to rack up their fourth league victory.

What's Happening??

Campus Activities

- Jan. 10—Basketball, Monday, M.U. vs. Flat River Jr. College, there, 7:30.
- Jan. 11—Basketball, Tuesday, M. U. vs. Washington U. J.-V., there, 6:30.
National Conference of Christians and Jews Planning meeting, room 115, 7:30-9:30.
- Jan. 12—Young Democrats meet, 4:00, Wednesday to discuss amendments to the constitution to be voted on Jan. 14.
- Jan. 14—Basketball, Friday, Eden Seminary, there, 8:00.
Young Democrats vote on 3 constitutional amendments including an apportionment amendmen.
- Jan. 15—Purple Onion, Room 105, 8:00.
- Jan. 18—Basketball, Tuesday, M. U. vs. Jefferson Jr. College, home, 8:00.
- Jan. 21—S. A. Movie, "Captain Newman, M.D.," Room 105, 8:00, admission \$.50.
- Jan. 22—M. U. Gold Team bowls Logan 'B' team, M. U. Blue bowls Forest Park Community College 'C' team in St. Louis Intercollegiate League.

Traffic Rules To Be Enforced

Traffic regulations will be strictly enforced next semester according to Chief of Security, James J. Nelson.

Mr. Nelson explained that by now students should be familiar with the traffic and parking rules. "Every students, regardless of whether he registered an automobile, received a leaflet and a booklet concerning traffic and parking rules."

Nelson also explained that drivers should not stop or unload their cars in campus driveways because it impedes traffic flow.

Pedestrians are asked to use cross walks in order that traffic tie-ups be minimized.

All students should use the trash receptacles that are placed on parking lots and walkways.

Film Series Begins Friday With French-made Movie

Beginning on Friday, January 14, 1966, the faculty committee will present a series of movies in Room 105 at 8:00 p.m.

These movies, which will consist of five American and five foreign films, plus a few assorted shorts, will be presented every other Friday thereafter, and there will be no charge for admission to students of Missouri University.

Jan. 14 "Les Liasons Dangereuses" (Fr.)--serious "dirty" picture. "Requiem for a Heavyweight"--Jackie Gleason in the story of Cassius Clay.

Jan. 28 "Knife in the Water"--Polish version of James Bond.

Feb. 11 "Shoot the Piano Player"--a parody of an homage to the American gangster film.

Feb. 25 "Maltese Falcon"--with Humphrey Bogart, Sidney Greenstreet, Peter Lorre.

Mar. 11 "Triumph of the Will"--

Hitler as Christ redeeming Germany.

Mar. 25 "Son of the Sheik"---Rudolph Valentino's last film and a short featuring Charlie Chaplin and Fatty Arbuckle.

Apr. 15 "Rules of the Game"--controversial French comedy.

Apr. 29 "The Connection"--movie about dope addicts in America.

May 13 "King Kong", plus "Night and Fog", a short documentary about concentration camps.

May 27 "Yojimbo"--Japanese Western.

Patronize
Mizzou News
Advertisers

Steak * Chicken * Shrimp

WANTED:

CUSTOMERS--

NO EXPERIENCE NECESSARY

The Dog House

"Hot Dogs 10 Ways"



9040 Natural Bridge
Always Open

It's Too Cold To Swim!
Try Our Pool!!

INTRODUCTORY OFFER

With This Ad

Play Pool For . . . **25¢** per hr.

1 Coupon Per Person

Minimum Of 2 Players Per Table

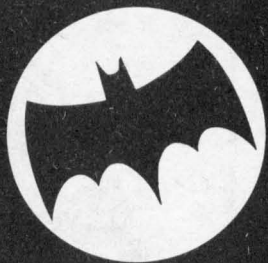
Esquire Cue Club

St. Louis' Most Beautiful Billiard Center
6724 Clayton Road

Ladies Invited

SEE OUR DISPLAY OF HOME AND COMMERCIAL POOL TABLES

BATMAN IS COMING!



WEDNESDAY!

abc IN COLOR ON

6:30 PM

KTVI 2
ST. LOUIS